



Operating Instructions

SAFETY

- Riders over 16 years old only
- Never turn sharply at high speed
- Always go straight up and down steep inclines, never across a steep incline
- Always select low range gear before reaching steep incline
- Read all instructions before operation
- Learn to ride in LO ratio, LO power before moving to HI ratio and HI power

Rear Tray



Release both catches to drop rear only



Release extra catch to drop sides as well



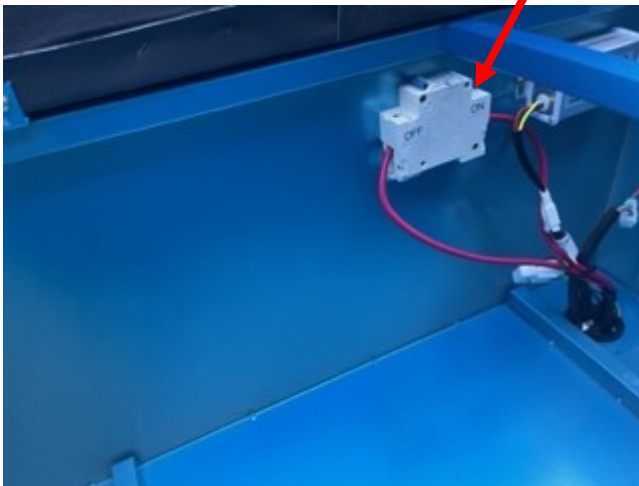
Release catch each side and lift to tilt tray



Charging

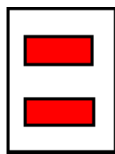
Plug charger in and connect
to wall socket

Ensure master switch under seat
is ON when charging

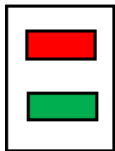


Appx 4 hours to 80% - Appx another 2 hours to 100%

CHARGER LIGHTS



Fast Charging—Up to 80%



Trickle Charging—80-100%

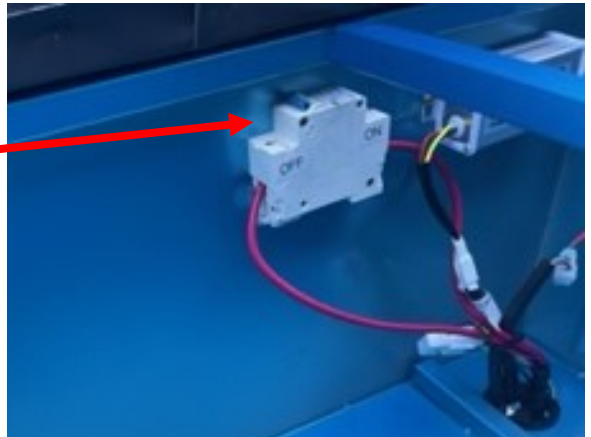
- For good battery life it is recommended to recharge when battery power is at 30% remaining.
- Ensure fully charged before storing when not in use
- Ensure master switch under seat is turned off when not in use

Operation

Turn master switch to ON

Switch is under seat

**Leave switch OFF when
not in use or overnight**



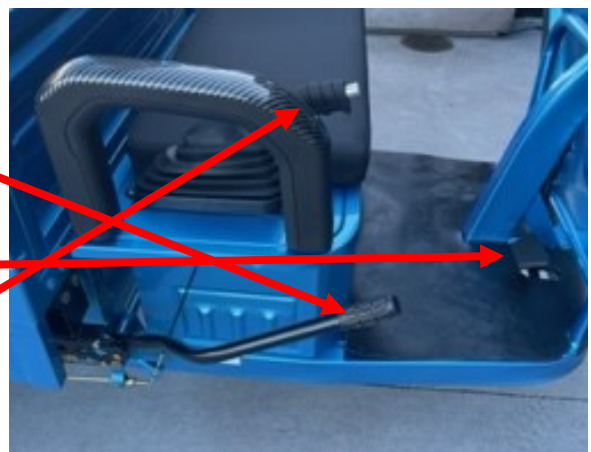
Turn Key ON



Select HI (down) or LO Ratio (up)

Place foot on brake

Release Handbrake



Select Hi / MED / LO power

Select Forward or Reverse



Twist throttle GENTLY to
Accelerate

*Start with LO power before
moving to MED or HI*



Rear wheel foot brake
*Rear wheel is 80% of braking
power, always use rear brake
to slow or stop*



Front wheel brake
*Only has light braking power.
Always use rear brake as default
and ADD front brake when going
down hill*



Handbrake
Always used when parked



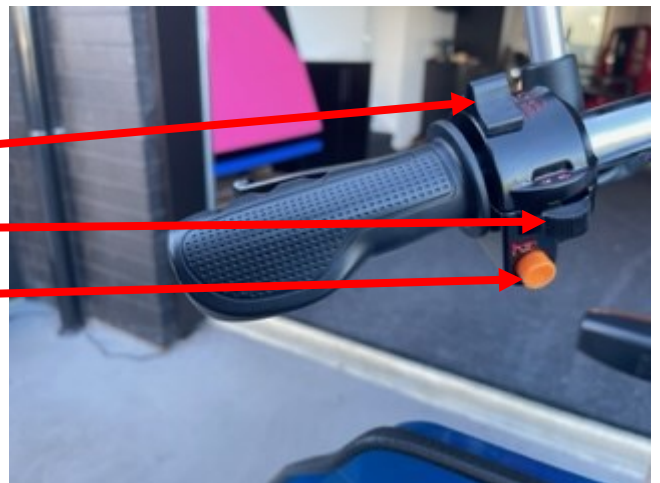
Lights—Park is rear only



Lights—LO/Hi Beam

Indicators—L/R

Horn



Voltage Speed Battery status



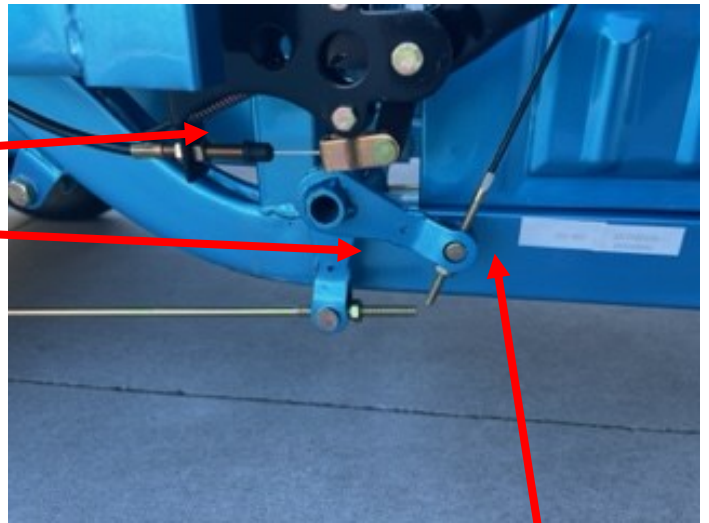
Outside temp KM travelled

When turned on—Shows total km for 10 seconds then trip km during use

Note: Speed is only correct in HI ratio

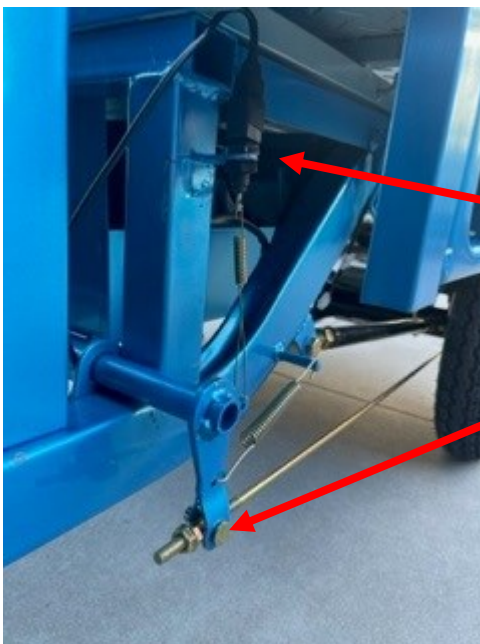
Servicing

HI/LO Ratio adjustment
Right rear brake adjustment



Handbrake adjustment

Brake light adjustment
Left rear brake adjustment



Front brake adjustment

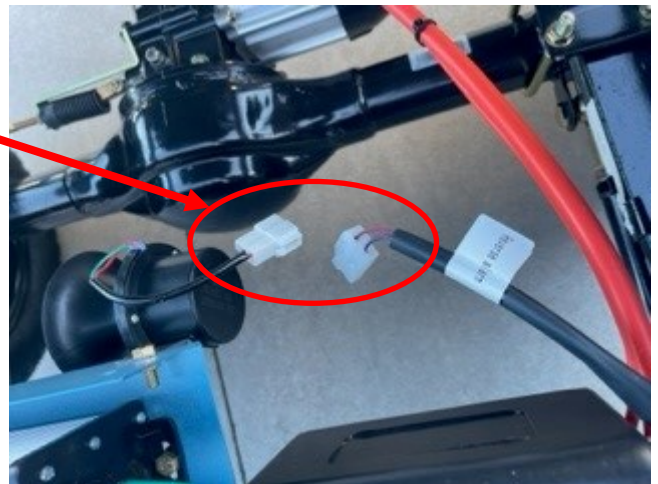


Footbrake adjustment
-Under seat



Plug in to connect reversing
warning speech

Caution, very loud!



For spare parts—Contact us
info@cargoev.co.nz